

# TWO SCALE EXERCISE

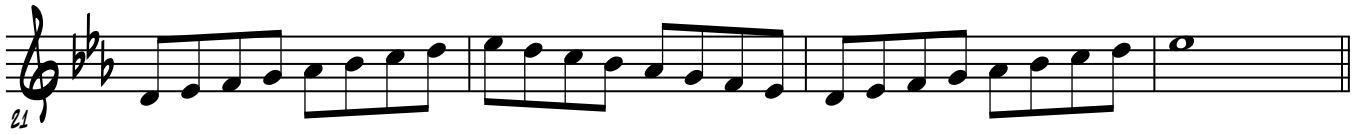
1.



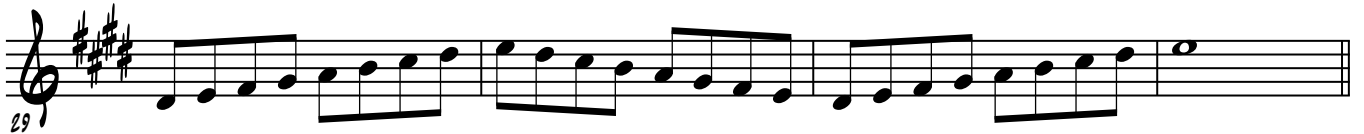
2.



3.



4.



TWO SCALE EXERCISE

5.  
33

Exercise 5, measures 33-36. Treble clef, key signature of three sharps (F#, C#, G#). Ascending and descending eighth-note scale runs.

37

Exercise 5, measures 37-40. Treble clef, key signature of three sharps (F#, C#, G#). Ascending and descending eighth-note scale runs.

6.  
41

Exercise 6, measures 41-44. Treble clef, key signature of three sharps (F#, C#, G#). Ascending and descending eighth-note scale runs.

45

Exercise 6, measures 45-48. Treble clef, key signature of three sharps (F#, C#, G#). Ascending and descending eighth-note scale runs.

7.  
49

Exercise 7, measures 49-52. Treble clef, key signature of four sharps (F#, C#, G#, D#). Ascending and descending eighth-note scale runs.

53

Exercise 7, measures 53-56. Treble clef, key signature of four sharps (F#, C#, G#, D#). Ascending and descending eighth-note scale runs.

8.  
57

Exercise 8, measures 57-60. Treble clef, key signature of one sharp (F#). Ascending and descending eighth-note scale runs.

61

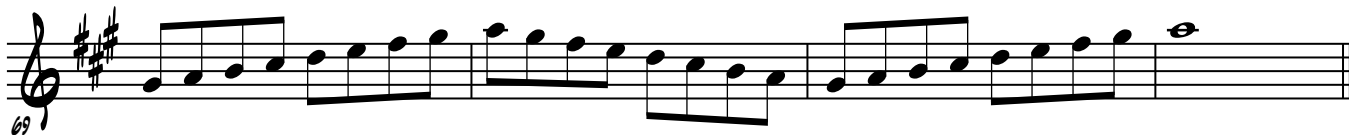
Exercise 8, measures 61-64. Treble clef, key signature of two flats (Bb, Eb). Ascending and descending eighth-note scale runs.

TWO SCALE EXERCISE

9.



65




69

10.



73



77

11.



81



85

12.



89



93